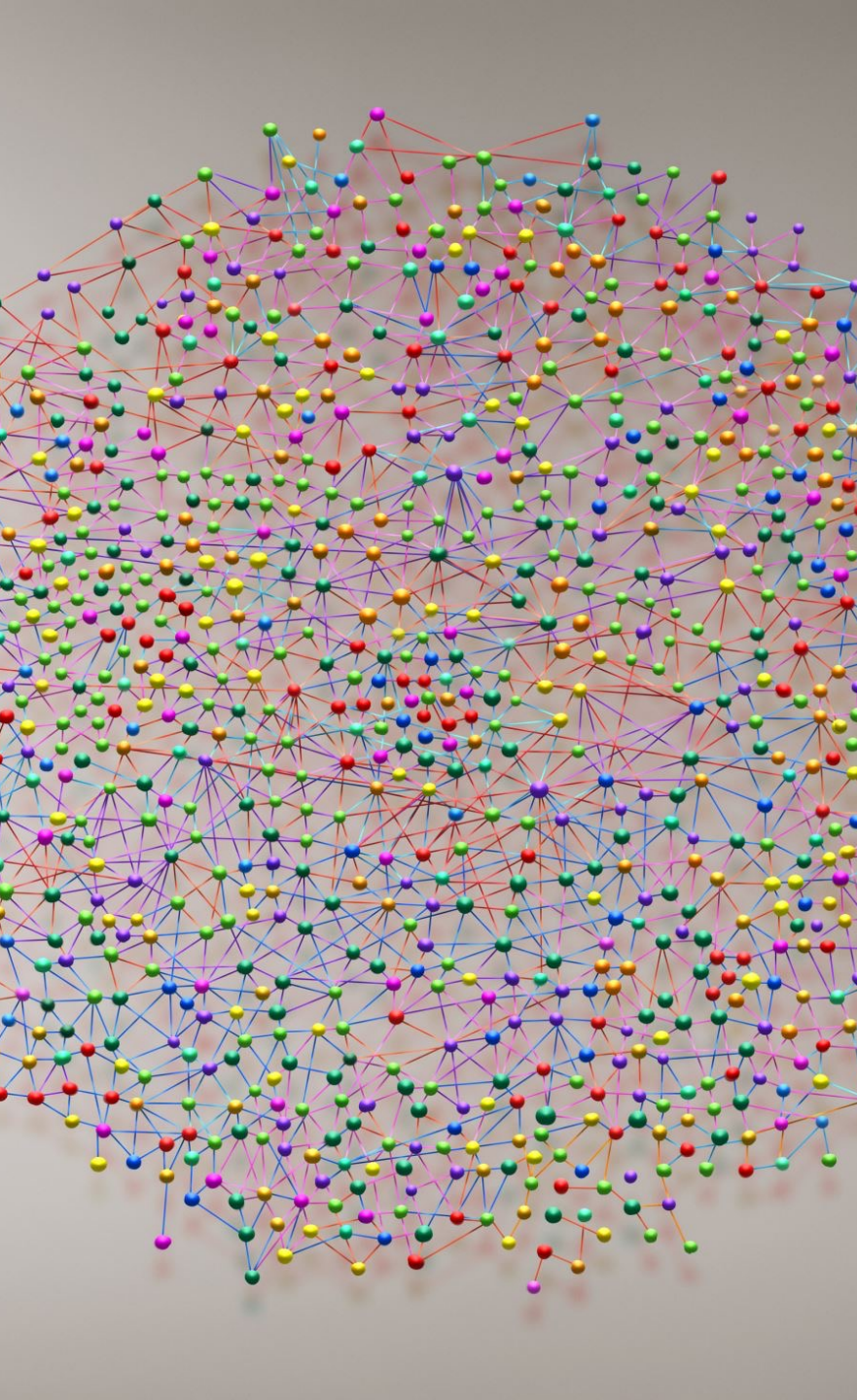




---

# Welcome to the Faculty Pathway Session: Mind Mapping Software



# Introduction to Mind Mapping

- A visual technique used to represent and organize information, thoughts, ideas, and concepts in a hierarchical and interconnected manner.
- Key characteristics:
  - Central Idea
  - Branches
  - Key words
  - Visual elements
  - Hierarchy
  - Non-linear
  - Organizational tool
  - Visual thinking

# Mind Mapping Software

- Common uses of mind mapping software:
  - Brainstorming
  - Note-taking
  - Project Planning
  - Problem-solving
  - Content Organization
  - Knowledge management
  - Presentations
  - Goal setting and so much more!



# Popular Mind Mapping Software

## Xmind

- <https://xmind.app/>
- comprehensive and versatile
- Offers both free and paid versions

## Coggle

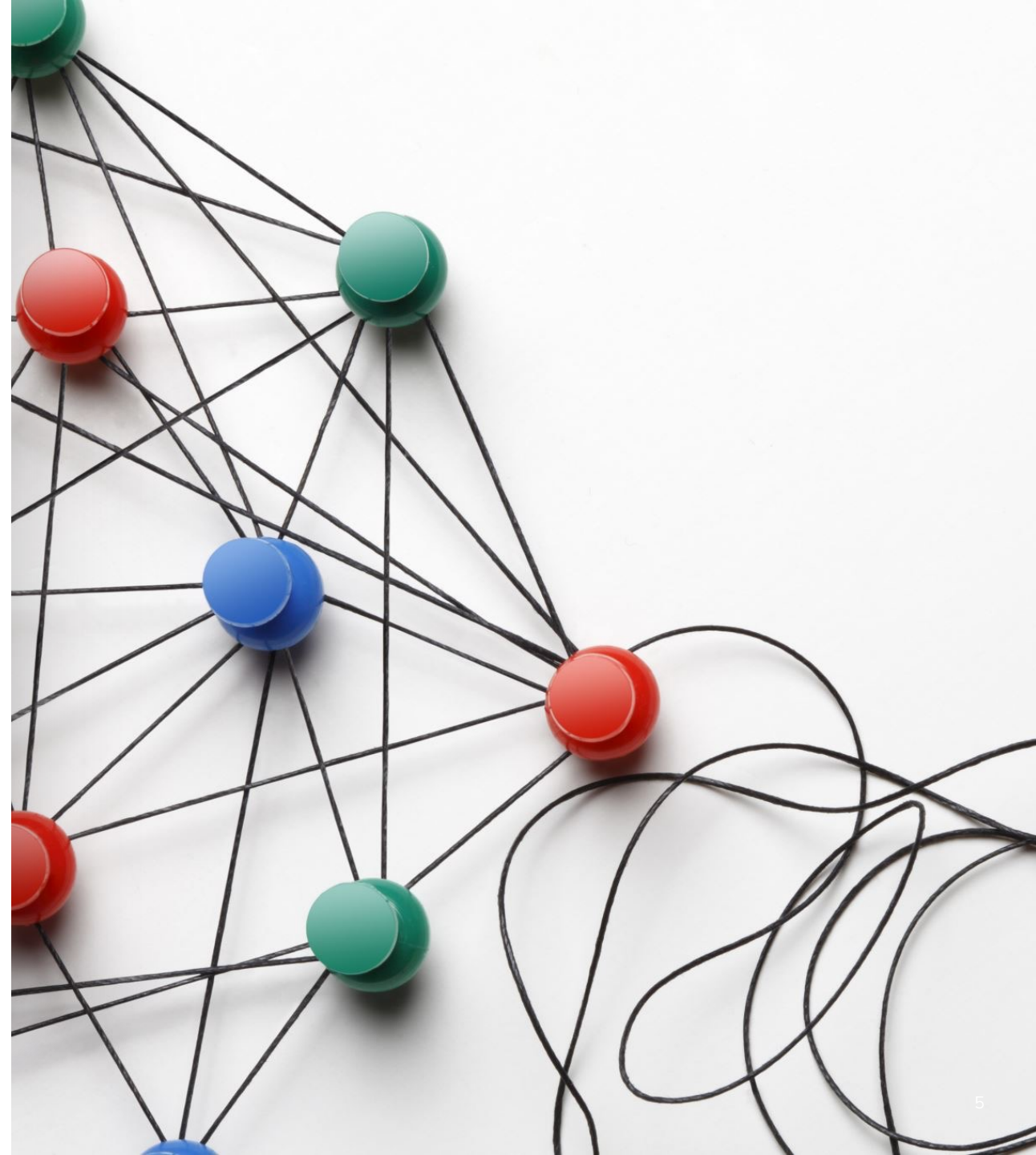
- <https://coggle.it/>
- simple and user-friendly
- Offers both free and paid versions

## MindMup

- <https://www.mindmup.com/>
- Offers free and paid versions

# Tips and Best Practices

- Start with a clear goal
- Use a central idea or node
- Embrace visual elements
- Keep it simple
- Use branches to create a hierarchy
- Maintain consistency
- Prioritize and group information



# Tip of the day

## ◆ TIP OF THE DAY ◆

Writing is rewriting. Don't be discouraged by your first draft; it's called a "rough" draft for a reason. Embrace the editing process as an opportunity to refine and polish your work.

# Thank you for attending

**Please complete the exit survey →**

**Join us for our upcoming session on Nov 2!**

**For more information:** <https://faculty.osu.edu/faculty-p>



**Kaprea Johnson, PhD, Associate Vice Provost for Faculty Development & Recognition  
(Johnson.9545)**

**Faculty Affairs:** [faculty.osu.edu](https://faculty.osu.edu)

**New Faculty Network:** [faculty.osu.edu/faculty-support/faculty-life/faculty-networks](https://faculty.osu.edu/faculty-support/faculty-life/faculty-networks)